



**SEA -BIRD ELECTRONICS, INC.**

1808 136th Place N.E., Bellevue, Washington 98005 USA

Telephone: (425) 643-9866 Telex: 292915 SBEI UR

Fax: (425) 643-9954

email: seabird@seabird.com

SBE P/N 50201

DATE	SYM	REVISION RECORD	AUTH	DR	CHK

## 9plus CHLAM Ext. Cage Mount Kit

*Kit Contents*

SBE P/N	Manufacturer P/N	Primary SBE Application	QTY
231230	CHLAM Mounting Clamp	Clamp directly to CHLAM	2
231231C	SBE 9plus cage mount	Attaches CHLAM mounts to cage with 23383 mount	2
23383	Cage Clamp Sensor Mount	Attaches Cage mounts to cage	4
30254	Washer, 1/4 split ring	Lock washer for 30377 Hardware	12
30377	Bolt, 1/4-20 x 1-1/4 Socket	Same Hardware for all parts	14
67006	SBE Assembly Drawing	SBE 9plus CHLAM External Cage Mount Kit Assembly	1

### Procedure for Kit Assembly

*Drawing number 67006*

1. REFER TO SBE ASSEMBLY DRAWING NUMBER 67006 FOR FINAL INSTRUCTIONS
2. Install Mount clamps (231230) onto bars (231231C) with screws and washers as shown.
3. Install Chlam into cage mounts and secure each clamp with 1 screw (30377).
4. Hold Chlam in place against vertical Carousel bars, and carefully secure top mount bar with blocks and hardware (23383, 30254, 30377) as shown.
5. Secure lower mount bar in same manner.
6. Tighten down all screws together at the end. All screws into Celcon should be tightened only until lock washers are flattened. Do not crank down hardware, or Celcon will crack.

SBE Drawings:

**67006**

SBE 9plus CHLAM Ext. Cage Mount Kit

### **Sea-Bird Electronics Procedure**

PROCEDURE NUMBER: **67006**

TITLE: **SBE PN50201, SBE9plus to CHLAM Mount Kit**

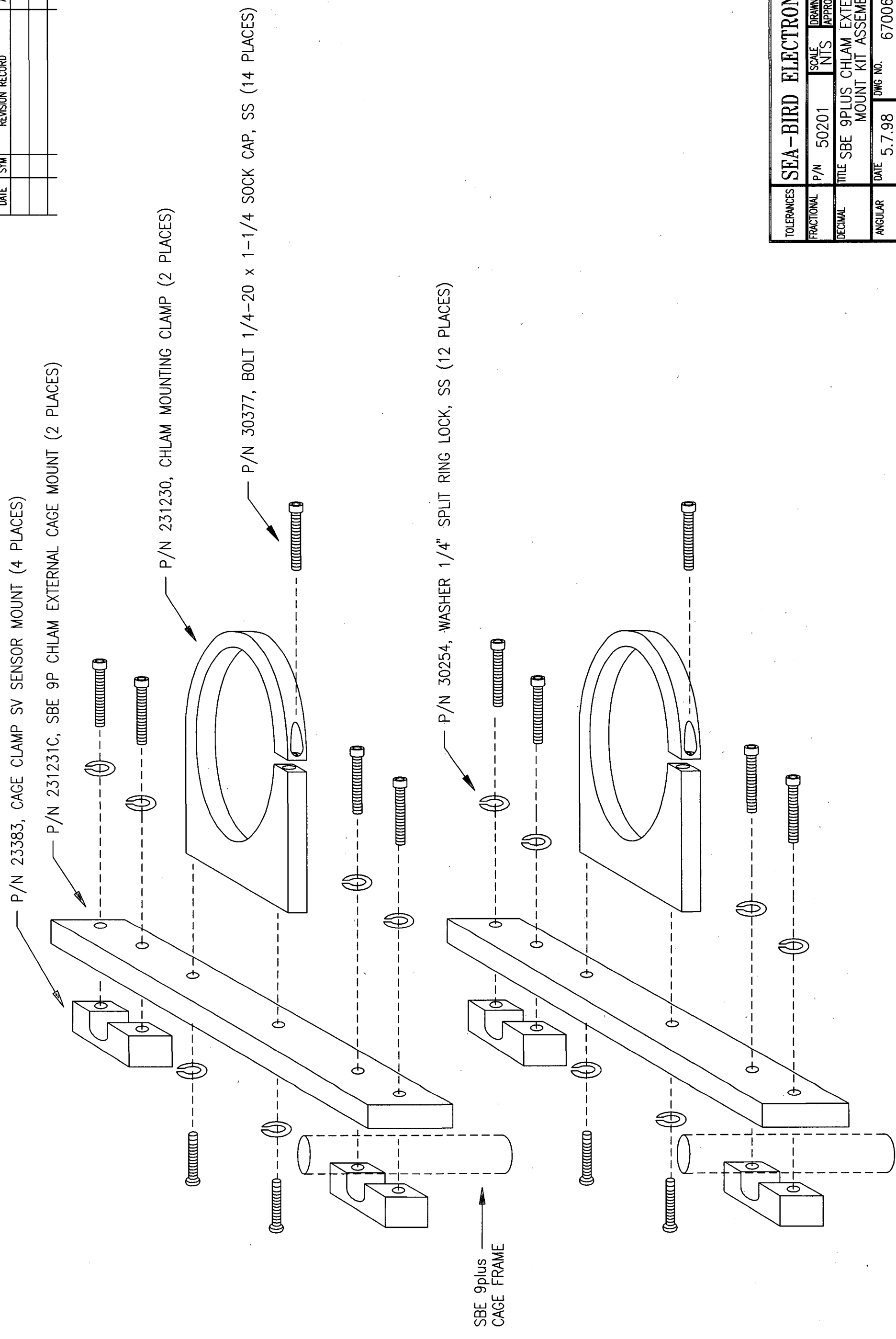
REVISION:

EFFECTIVE DATE: **05/30/2002**

CHECKED BY:

PAGE 1 of 1

DATE	SYM	REVISION RECORD	AUTH.	DR.	CK.



SEA-BIRD ELECTRONICS, INC			
TOLERANCES	P/N 50201	SCALE NTS	DRAWN BY CEG
FRACTIONAL			APPROVED BY
DECIMAL	TITLE SBE 9PLUS CHLAM EXTERNAL CAGE MOUNT KIT ASSEMBLY		
ANGULAR	DATE 5.7.98	DWG NO. 67006	REV