



SEA - BIRD ELECTRONICS, INC.

1808 136th Place N.E., Bellevue, Washington 98005 USA

Telephone: (425) 643-9866 Telex: 292915 SBEI UR

Fax: (425) 643-9954

email: seabird@seabird.com

SBE P/N 50183

DATE	SYM	REVISION RECORD	AUTH	DR	CHK

SBE25 C-Star Transmissometer Mount Kit

Kit Contents

SBE P/N	Manufacturer P/N	Primary SBE Application	QTY
231093	SBE 25 C-STAR mount plate	Main Sensor mount plate	1
231444	SBE 25 C-STAR Mount clamps	Clamps for sensor, install on plate	4
30180	Machine screw, 10-24 x 1" FH SS	Hardware for cage-plate interface	4
30249	Washer, #10 flat, SS	Hardware for cage-plate interface	4
30361	Nut, 10-24 nylon stop	Hardware for cage-plate interface	4
30377	Bolt, ¼-20 x 1-1/4 Socket	Hardware for Clamp-plate interface	8
67008	SBE Assembly Drawing	SBE 25 C-Star Xmiss Mount Kit Assembly	1

Mount Kit Assembly

Drawing number 67008

A. Assembly of the mount block

1. SBE Drawing number 67008 shows basic assembly for a 25cm C-Star Transmissometer.
2. Install 231444 clamps as shown per SBE drawing 67008. Use 2 each PN 3037 Bolts for each clamp. If you are using a C-Star shorter than 25 cm, you will need to position the clamps closer together.
3. Machine screw 30180, with nut and washer are used to mount plate directly to SBE 25 Cage. Plate installs on cage next to SBE 25, on the same side of the cage.

B. Installation of C-STAR and additional sensors.

1. When you install mount clamps to plate, keep them very loose.
2. After sliding C-STAR into place, tighten clamps down in pairs, not one at a time. This will insure that C-STAR is tight on all sides, and cannot slip out of alignment.
3. If an additional sensor mount is to be installed on the back of the C-STAR plate, screws must be inserted before C-STAR.

Parent Part Number: varies

SBE Drawings:

67008 C-Star Xmiss Mount kit Assembly

PROCEDURE NUMBER: 67008.1

TITLE:

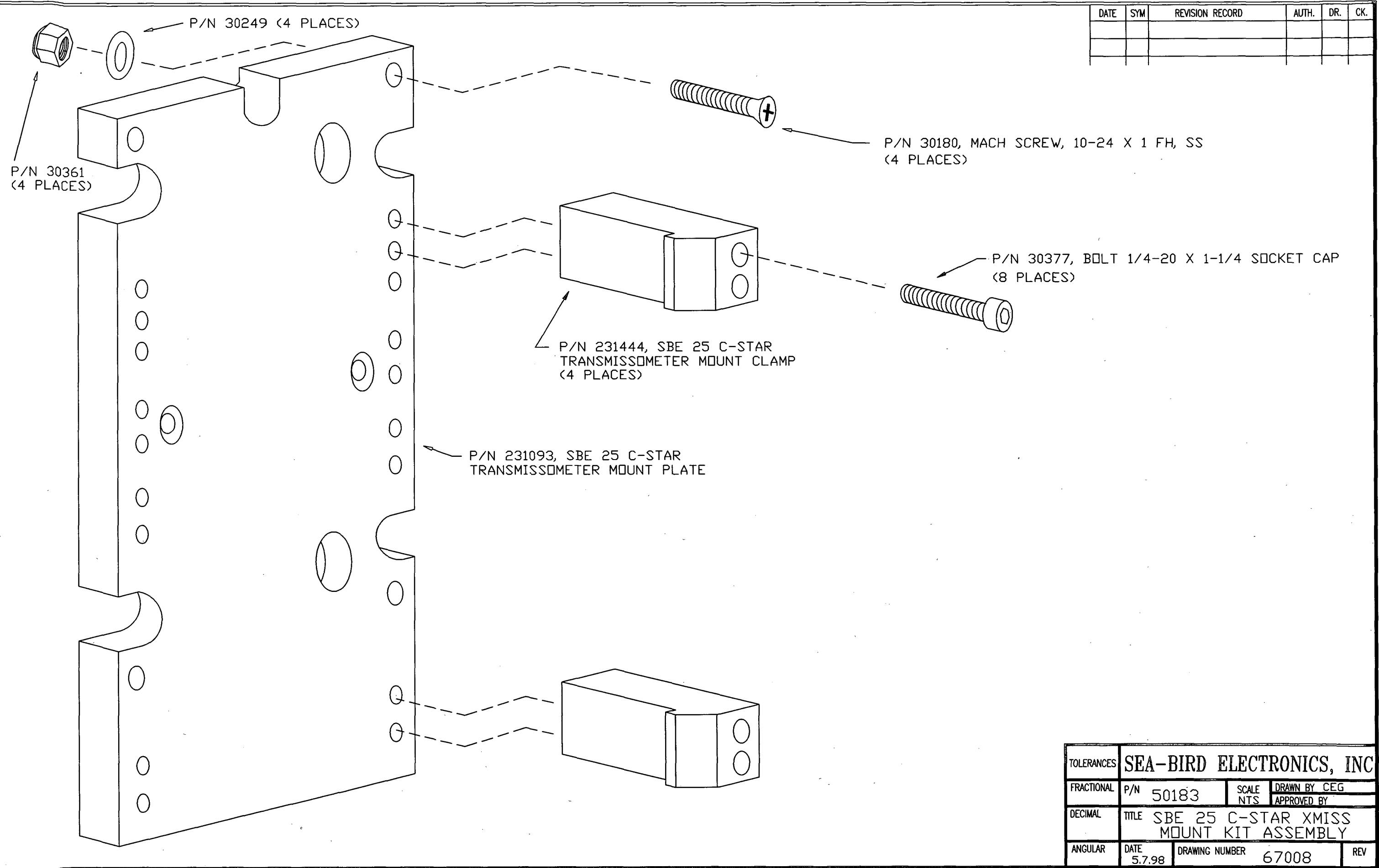
SBE25 C-Star Xmiss Mount Kit Assembly

REVISION:

EFFECTIVE DATE: **04/30/98**

CHECKED BY:

DATE	SYM	REVISION RECORD	AUTH.	DR.	CK.



TOLERANCES	SEA-BIRD ELECTRONICS, INC				
FRACTIONAL	P/N 50183	SCALE NTS	DRAWN BY CEG		
DECIMAL	TITLE SBE 25 C-STAR XMISS MOUNT KIT ASSEMBLY				
ANGULAR	DATE 5.7.98	DRAWING NUMBER 67008	REV		