

**SEA-BIRD ELECTRONICS, INC.**

1808 136th Place N.E., Bellevue, Washington 98005 USA

Telephone: (425) 643-9866 Telex: 292915 SBEI UR

Fax: (425) 643-9954

email: seabird@seabird.com

SBE P/N 50196

DATE	SYM	REVISION RECORD	AUTH	DR	CHK

SBE 32 24-Place Datasonics Mount Kit*KIT CONTENTS*

SBE P/N	Manufacturer P/N	Primary SBE Application	QTY
231056	SBE 32 12/24PI Datasonics Mount Plate	Main Sensor Securing Plate	1
231141	SBE 32 24PI Datasonics Mount Bar	Secures Mount Plate to Carousel Stand	1
23859	SBE 32 Datasonics Mount Brackets	Secures Datasonics to Mount Plate	2

HARDWARE

SBE P/N	Part Description	Primary SBE Application	QTY
30210	Nut 3/8-16 Nylon Stop	Used with Mount Plate Securing Bolts	4
30254	Washer, 1/4" Split Ring Lock	Used with Datasonics Mount Brackets	4
30257	Washer, 3/8" Flat SS	Used with Mount Plate Securing Bolts	8
30377	Bolt, 1/4-20 x 1-1/4 Socket	Datasonics Mount Bracket Securing Screws	6
30570	Washer, 1/4" Flat SS	Used with Datasonics Mount Brackets	4
30840	Bolt, 3/8-16 x 3-1/2 Hex	Mount Plate Securing Screws	4

A. Background

1. Refer to SBE Assembly Drawing, number 67087 for a detailed explanation of included parts, and further assembly instructions.
2. Do not overtighten screws into Celcon, as it may crack the Celcon material.

B. Assembling the Fixture

1. Mount clamps (23859) to plate (231056) with screws and washers (30377, 30254, 30570).
2. Install screw (30377) loosely into open end of each clamp.
3. Slide Bolts (30840) and washers (30257) through plate. Fit plate and mount block (231141) together around vertical extension stand bar.
4. Secure Plate and block to bar with nut (30210) and washer (30257).

C. Installing Datasonics Altimeter

1. Slide Altimeter through mount clamps (23859) such that sensor end faces down, and unit is vertically centered between the clamps.
2. Tighten 30377 bolts on open end of clamps just until they can hold the sensor's weight. Turn each screw up to ¼ turn farther to insure proper tension.
3. An overtightened screw will cause the clamp to crack. An undertightened screw will allow the sensor to fall out of the block.

SBE DRAWING: 67087TITLE: SBE 32 24-Place Datasonics Extension Stand Mount Kit AssemblyREV:**Sea-Bird Electronics Procedure**

PROCEDURE NUMBER: 67087.1

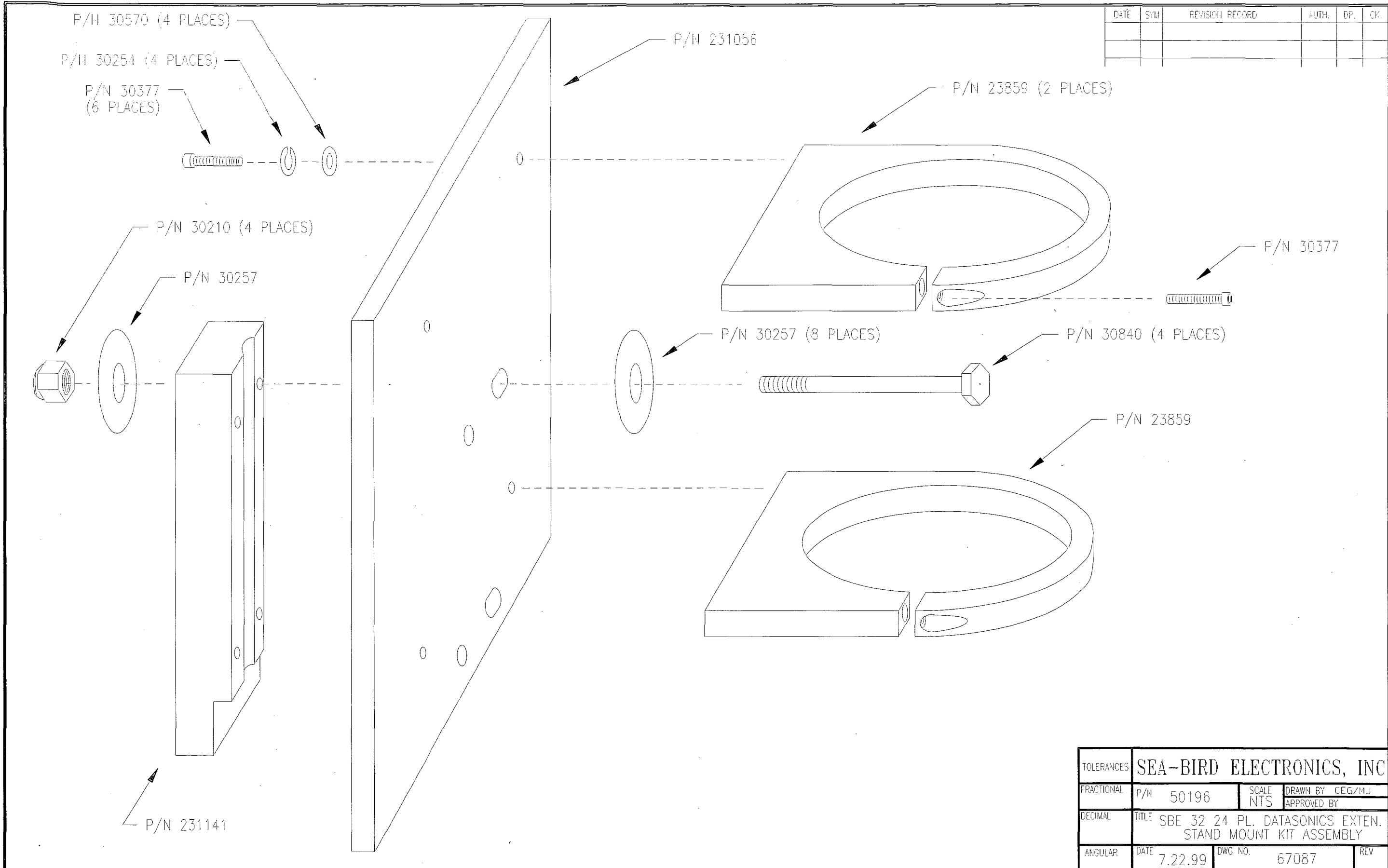
TITLE: **SBE 32 24-Place Datasonics Mount Kit**

REVISION:

EFFECTIVE DATE: 11/25/2002

CHECKED BY: _____ PAGE 1 of 1

DATE	SYM	REVISION RECORD	AUTH.	DP.	OK.



TOLERANCES	SEA-BIRD ELECTRONICS, INC				
FRACTIONAL	P/N 50196	SCALE NTS	DRAWN BY CEG/MJ APPROVED BY		
DECIMAL	TITLE SBE 32 24 PL. DATASONICS EXTEN. STAND MOUNT KIT ASSEMBLY				
ANGULAR	DATE 7.22.99	DWG NO. 67087	REV		