



# SEA-BIRD ELECTRONICS, INC.

1808 136th Place N.E., Bellevue, Washington 98005 USA

Telephone: (425) 643-9866 Telex: 292915 SBEI UR

Fax: (425) 643-9954

email: seabird@seabird.com

SBE P/N 50264

DATE	REV	REVISION RECORD	AUTH	DR	CHK
3.7.05	A	New Drawing Revision	CB	KLP	

## SBE 37 Through-Bolt Mounting Structure Assembly Kit

### KIT CONTENTS

SBE P/N	Manufacturer P/N	Primary SBE Application	QTY
231736	SBE37 Through-Bolt Mount, Part 1	Mount secures to sensor endcap	1
231737	SBE37 Through-Bolt Mount, Part 2	Mount secures to connector endcap	1
30633	Washer, 1/4" Split ring lock, Ti	Used with sensor endcap securing bolts	2
30634	Washer, 1/4" Flat, Ti	Used with sensor endcap securing bolts	2
30790	Bolt, 1/4-20 x 3/4 Hex Ti	Secure mount part 1 to sensor endcap	2
31040	Mach screw, 8-32 x 1" FH Ti	Secure mount part 2 to connector endcap	3

### Installing Through-Bolt Hardware onto a Microcat

#### A. Install Mount part one into sensor endcap

1. If other mounts exist, simply remove these and set them aside.
  - a. You may need to remove the single screw securing lower sensor endcap mount onto the endcap itself.
  - b. You will not be using any parts from these mounts.
2. Install mount part 1 (231736) onto sensor endcap, such that sunken holes are facing out from the microcat housing.
3. If is recommended to use NeverSeez on all hardware.
4. Secure mount part 1 to sensor endcap with 2 bolts (30790), 2 lock washers (30633), and 2 flat washers (30634)
  - a. Install Lock washer first onto bolt, followed by flat washer.
  - b. Cover remaining exposed bolt threads with NeverSeez after installing washers.
5. You will be easily able to install your mounting hardware through the remaining (outer) pair of holes on the mount.

#### B. Install Mount part two into connector endcap

1. If current mounting assembly exists, remove this and set it aside. You will not need any parts from this mounting fixture.
2. Endcap may be installed in the reverse direction from where you want it. In this case, first install the mount part 2, then use that mount to carefully turn the endcap 180°.
3. Install mount part 2 (231737) onto connector endcap, such that screw holes all line up, and countersinks face away from the microcat endcap.
4. Secure to endcap with three screws (31040).
5. If is recommended to use NeverSeez on all hardware.
6. You will be easily able to install your mounting hardware through the remaining (outer) pair of holes on the mount.

SBE DRAWING: 67096

TITLE: SBE37 Through-Bolt Mounting Assembly

REV:

### Sea-Bird Electronics Procedure

PROCEDURE NUMBER: 67096

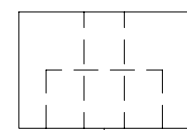
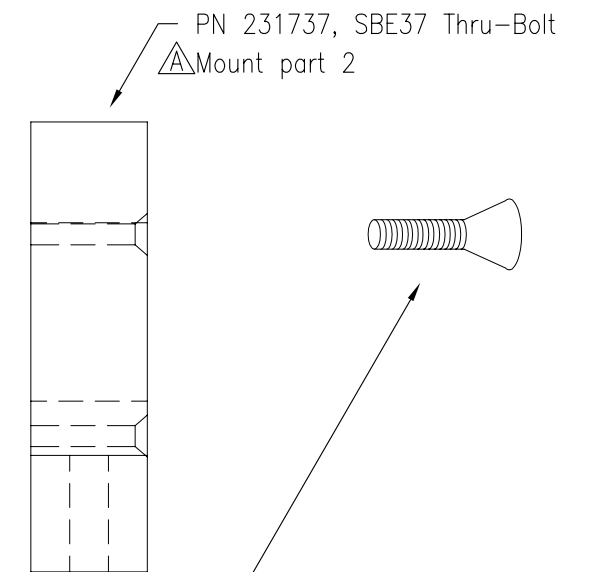
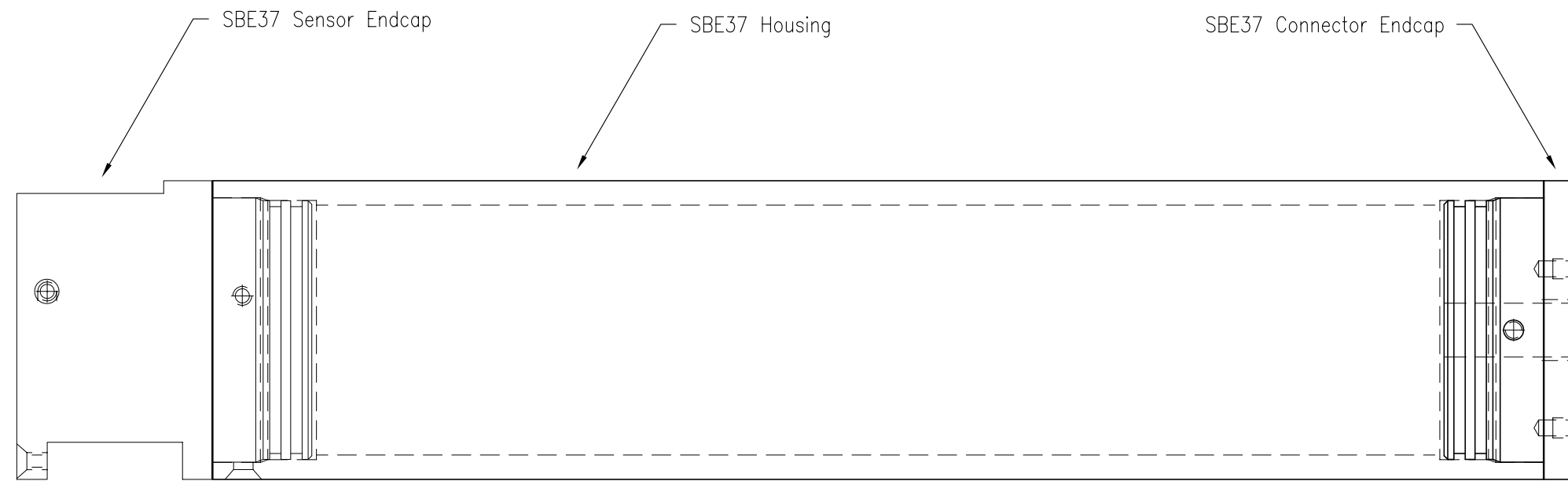
TITLE: **SBE37 Through-Bolt Mounting Hardware Kit**

REVISION: A

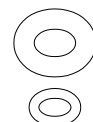
EFFECTIVE DATE: 3/7/2005

CHECKED BY: \_\_\_\_\_ PAGE 1 of 1

DATE	SYM	REVISION RECORD	AUTH.	DR.	CK.
3.1.05	A	FIXED DESCRIPTION	CB	KLP	



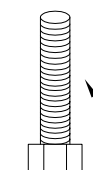
PN 231736, SBE37 Thru-Bolt Mount part 1  $\triangle$



PN 30634, Washer, 1/4" Flat Ti (2 Places)

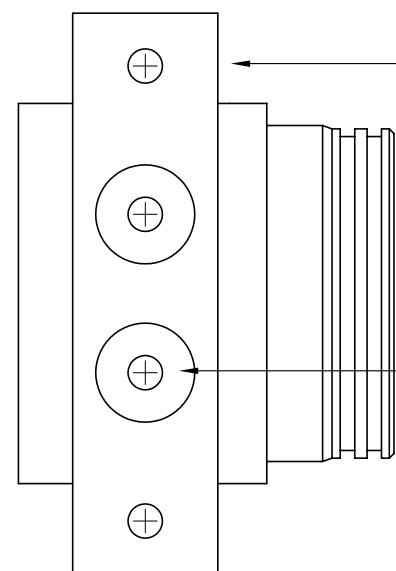
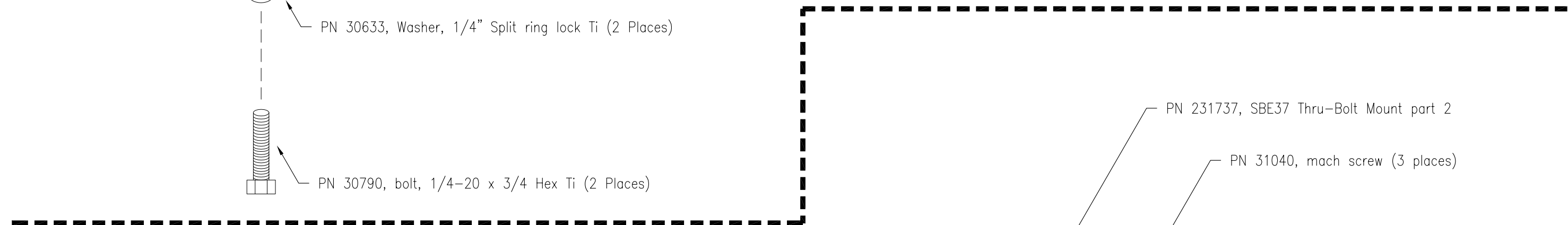


PN 30633, Washer, 1/4" Split ring lock Ti (2 Places)



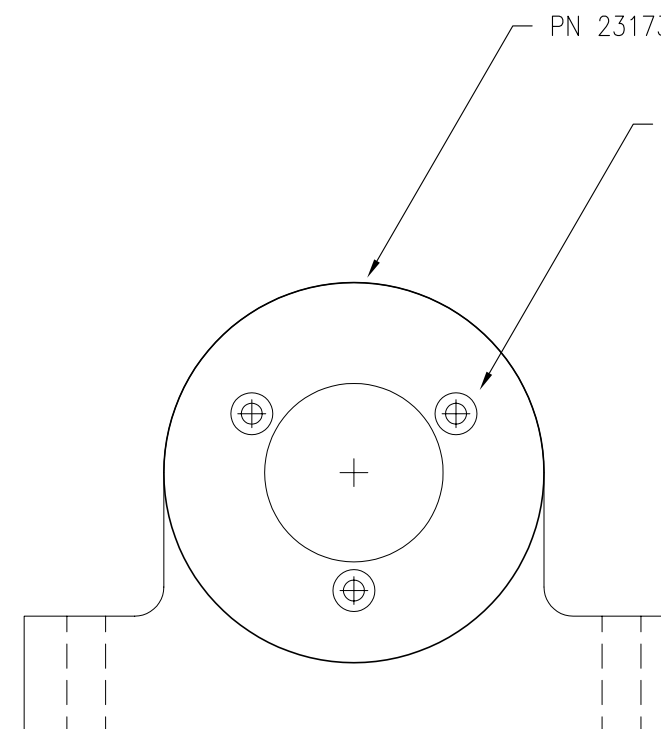
PN 30790, bolt, 1/4-20 x 3/4 Hex Ti (2 Places)

PN 31040, mach screw, 8-32 x 1" FH Ti (3 Places)



PN 231736, SBE37 Thru-Bolt Mount Part 1

PN 30790, 30633, 30634, bolt nd washers (2 Places)



PN 231737, SBE37 Thru-Bolt Mount part 2

PN 31040, mach screw (3 places)

TOLERANCES	<b>SEA-BIRD ELECTRONICS, INC</b>			
FRACTIONAL	P/N 50264	SCALE N.T.S.	DRAWN BY MJ	
DECIMAL	TITLE SBE37 Microcat Thru-Bolt Mounting Structure			
ANGULAR	DATE 03.23.00	DRAWING NUMBER 67096	REV A	